

Product Brochure For D822

Boring Sleeve - Straight - CHR 16-32

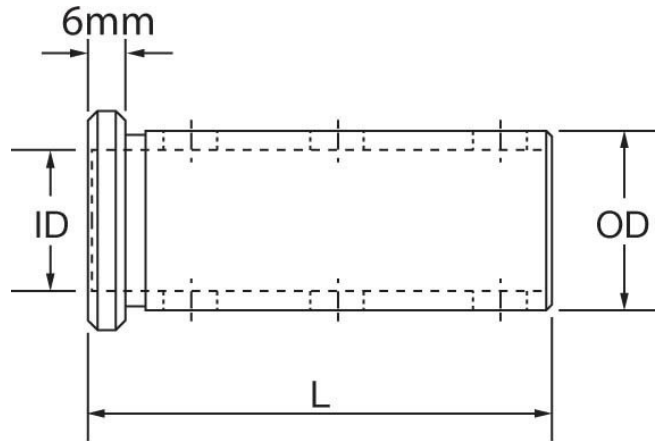
Suits CNC Lathes
Ø32mm x Ø16mm



On Sale - Back In Stock Soon

Ex GST	Inc GST
\$86.00	\$98.90
\$68.70	\$79.00

ORDER CODE:	D822
MODEL:	CHR 16-32
Type:	Set Screws
OD (mm):	32
ID (mm):	16mm
L (mm):	86
L1 (mm):	~



Description

Used in the turrets of CNC lathes to hold boring bars and other cutting tools. Universal design allows these sleeves to be fitted to all CNC machines with turrets

Features

- Precision ground
- Clamping Flat for clamping the sleeve into the turret
- Recessed grub screws to clamp the item

Product Brochure For D822

Recommended Accessories

L022
Right Hand Boring Bar

L036
Internal Threading

L037
Internal Threading

