

Product Brochure For D594

Heavy-Duty Bench Drill - Belt Drive - BD-360

Table Tilts Left & Right To 45° & Rotates 360°
Ø20mm Drill Capacity with 2MT Spindle Taper

Ex GST
\$538.00

Inc GST
\$618.70



| | |
|----------------------------------|------------|
| ORDER CODE: | D594 |
| MODEL: | BD-360 |
| Type - Bench / Pedestal: | Bench |
| Duty Type: | Heavy-Duty |
| Drilling Diameter Capacity (mm): | Ø20 |
| Spindle Taper (MT): | 2 |
| Spindle Travel (mm): | 85 |
| Throat Depth (mm): | 180 |
| Quill Diameter (mm): | 47 |
| Collar Diameter (mm): | 55 |
| Column Diameter (mm): | 72 |
| Spindle To Table (mm): | 410 |
| Spindle To Base (mm): | 600 |
| Table Shape: | Square |
| Table Size (mm): | 290 |
| Work Light: | Yes |
| Micro Switch On Pulley Guard: | Yes |
| Drive Belt Type: | A Section |
| Spindle Speed Steps (No.): | 12 |
| Spindle Speed Range (rpm): | 280 - 2380 |
| Motor Power (kW / hp): | 0.75 / 1 |
| Voltage / Amperage (V / amp): | 240 / 10 |
| Overall Height (mm): | 1000 |
| Nett Weight (kg): | 55 |



Description

The BD-360 bench drill, heavy duty rated compared to its little brother BD-325 and consequently has a few more user-friendly features. The larger drill head has a work light fitted underneath to shine directly onto your job, the quill diameter is approximately 20% larger to increase accuracy & the square table offers more surface area to work on, and additionally allows T-nuts & clamps to be used on this design. This drilling machine is Ø20mm rated & beneficial for anyone requiring to drill consistent accurate holes and is commonly suited for any home workshop or farm use.

Mostly constructed from cast iron and machined steel to provide superior stability and strength. Powered by a 0.75kW, 1hp, 240-volt induction motor and coupled to a 12-belt speed pulley system offering wide range of speeds between 280-2380rpm. The down feed handle is also made from cast iron in one solid piece design and fitted with soft hand grips for your comfort & convenient drilling depth feed control.

The drill quill is equipped with a 2 morse taper spindle allowing you to fit 2MT drill bits directly to the spindle or 1MT drill bits with an optional adaptor. A quality Ø3-Ø16mm keyed drill chuck with 2MT arbor is included & fitted. The drill table can tilt left or right, rotate 360 degrees and the height is also easily adjusted up or down via rack & pinion hand lever & can be locked into position. Furthermore, the whole table assembly can be swivelled away to allow the machined base to be used as a work support.

The magnetic safety switch with emergency stop is conveniently front mounted for quick access. The drill also includes an adjustable safety drill chuck guard and the belt cover is equipped with a safety switch to ensure safe belt speed changing.

Features

- Ideal for home, workshop or farm use
- Quiet V-belt drive system
- Quick action belt tensioning lever
- Drill chuck key holder mounted on right side of the machine
- Adjustable safety drilling chuck guard with flip up screen
- One piece cast iron drilling lever with comfort grips
- Safety micro switch on pulley guard
- Safety magnetic-type switch
- Rack & pinion table height adjustment with locking lever
- Table tilts left & right to 45° & rotates 360°
- Drilling depth stop
- Work light mounted underneath drill head to provide direct light onto work piece
- Slotted work table
- 12 Spindle speeds - 280, 420, 440, 550, 620, 660, 1150, 1180, 1400, 1550, 1830, 2380rpm
- Fan-cooled, copper wound 240V motor

Product Brochure For D594

Includes

- 16mm keyed drill chuck and arbor
- Chuck key to suit
- Drill drift tool to remove drill chuck or taper shank drills

Optional Accessories

- Replacement 16mm Drill Chuck (C290)
- Replacement 2MT x JT3 Arbour (D442A)

Specific Features



Left View



Magnetic Switch



Emergency Stop Switch and Light Switch



Work Light



Adjustable Safety Chuck Guard with Flip Up Screen



Safety Chuck Guard Flipped Up



1 Piece Cast Iron Drilling Lever



80mm Spindle Travel



Drilling Depth Stop Setting With Scale



Safety Micro Switch on Pulley Guard



Head Side View



A Section Belt Drive System

Product Brochure For D594



Chuck Key Holder



Belt Tension Lever and Lock



Speed Chart

| Speed Chart (RPM) and Recommendations | | | | | | |
|---------------------------------------|-------------|--------|--------|-------|------|-------|
| Imp. | Metric | 5/Wood | H/Wood | Brass | Alum | Steel |
| 1/16 - 3/16 | 1.5 - 4.8 | 3000 | 3000 | 3000 | 3000 | 3000 |
| 1/4 - 3/8 | 6.0 - 10.0 | 3000 | 1500 | 1200 | 2500 | 1000 |
| 7/16 - 5/8 | 11.0 - 16.0 | 1500 | 750 | 750 | 1500 | 600 |
| 11/16 - 1 | 22.0 - 25.0 | 750 | 500 | 400 | 1000 | 350 |
| 1 1/8 - 1 1/4 | 28.5 - 32.0 | 750 | 250 | 400 | 700 | 250 |

Recommended Speed for Drill Size and Material



Tilting and Rotating Cast Iron Table



Work Table



Table Height Adjustment Crank



Base



Drill Drift

Product Brochure For D594

Recommended Accessories

W3425
Drill Press Roller Support



P220
Gravity Feed Coolant System



S090A
Soluble Metal Cutting Fluid - 1
Litre



C086
Clamp Kit Tee Nuts



L300
Magnetic Swarf Remover



M9991
Magnetic Floor Sweeper



D1272
Metric 135° Precision HSS Drill
Set - 25 Piece



D1282
Imperial 135° Precision HSS
Drill Set - 29 Piece



Product Brochure For D594

D126

Metric 135° Precision HSS Drill Set - 170 Pieces



D1171

Metric Industrial HSS Reduced Shank Drill Set



D1181

Imperial Industrial HSS Reduced Shank Drill Set



D117

Metric HSS Reduced Shank Drill Set



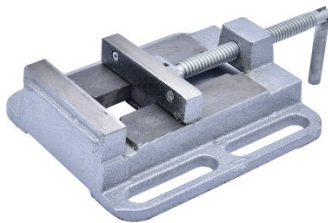
P090

Pipe & Tube Notcher Attachment



V124

Drill Press Vice



V144

Drill Press Vice



V145

Drill Press Vice



V141

Safeway Precision Drill Press Vice



V114

Tilting Drill Press Vice



V1204

Compound Drill Vice



V1205

Compound Drill Vice



Product Brochure For D594

C292

Industrial Drill Chuck - Keyless Type

C294

Industrial Drill Chuck - Keyless Type

D442

2MT x JT6 Drill Chuck Arbor

D442A

2MT x JT3 Drill Chuck Arbor



O043

Rust & Corrosion Preventive

O042

General Purpose Lubricant & Corrosion Inhibitor

O044

Rust & Corrosion Preventive

M800

Rubber Mat - Anti-Fatigue



M805

Rubber Mat - Anti-Fatigue

