

Product Brochure For D450

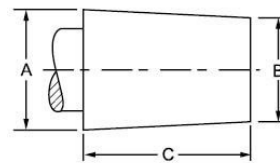
NT30 x JT6 Drill Chuck Arbor - M12 Threaded Shank

Suits Ø13mm Drill Chucks

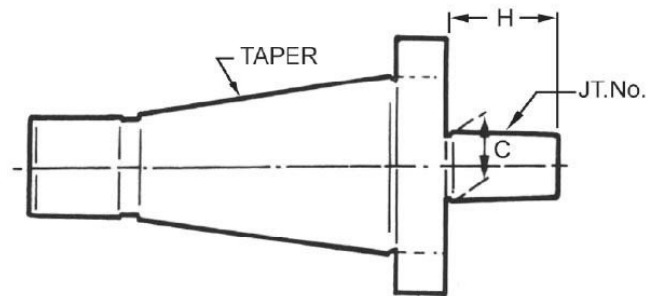
Ex GST
\$98.00

Inc GST
\$112.70

ORDER CODE:	D450
Long Taper (MT):	NT30
Short Taper (JT):	JT6
Suits Chuck Size (mm):	13
Threaded Shank:	M12



JACOBS TAPER SPECIFICATIONS			
TAPER	A	B	C
JT2	0.559"	0.487"	0.875"
JT3	0.811"	0.746"	1.219"
JT6	0.676"	0.624"	1.000"



Description

Drill chuck arbors have one end which is the taper of the machine. The most common are Morse Tapers for mounting in a drill press spindle or lathe, or NT tapers for mounting in Milling machines. The other end of the arbor is a short taper called a Jacobs Taper that is driven into the taper of the chuck body. The JT taper or Jacobs Taper is the most commonly used taper for mounting a drill chuck. The most common tapers used in Australia are JT2, JT3, JT4 & JT6

Features

- Hardened & precision ground with M12 drawbar thread

Product Brochure For D450

Recommended Accessories

C289

Heavy Duty Drill Chuck - Keyed
Type

C299

Safety Lock Drill Chuck -
Keyless Type

C292

Industrial Drill Chuck - Keyless
Type

