

Product Brochure For C7121

### 3 Jaw Self Centring Lathe Chuck - PS Series

Ø315mm  
Back Plate Mount



*gator chucks*



**Description**

PS Series semi steel body lathe chucks are supplied with one piece standard and reverse jaws.

Gator is a world class state of the art producer of manual lathe chucks with over 30 years of manufacturing experience and production excellence. Gator chucks are manufacturing to DIN 55029 standard and built to last for precision machining applications. The state of the art, ISO 9001-2000 manufacturing facility is quality focused producing chucks for the worldwide market.

The PS Series lathe chucks are available in direct mount or back plate mount.

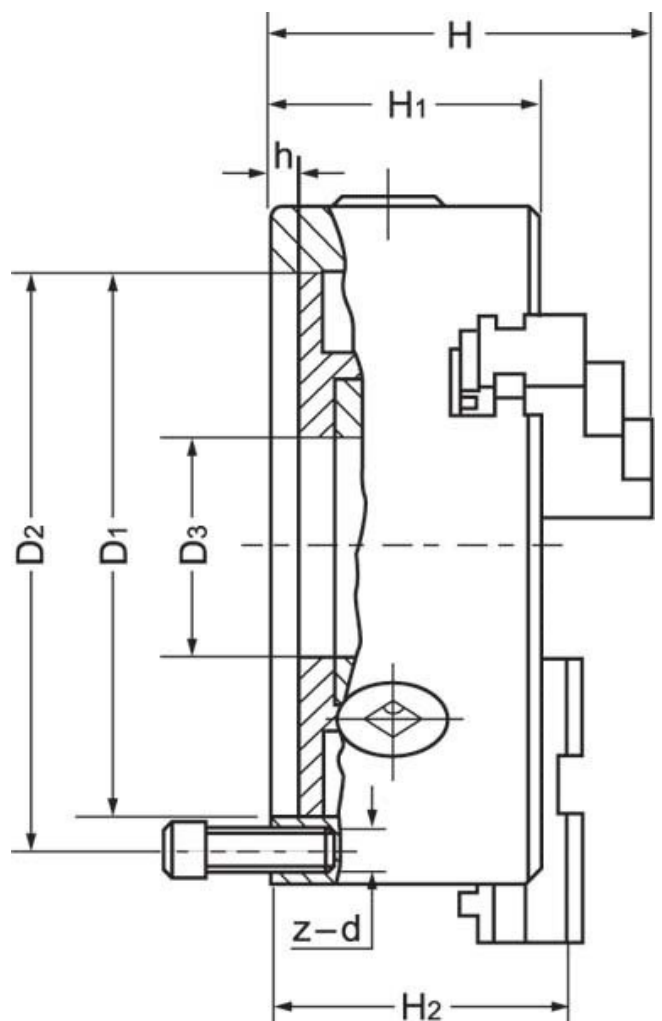
**Features**

- Comprehensive quality assurance and accuracy testing ensure standards remain high
- Each chuck is supplied with a set of inside and outside jaws and a chuck key
- All bearing surfaces are precisely machined
- Scroll plate is drop forged from fine alloy steel and finished with case hardening
- Jaw teeth, guideways & pinions are hardened & ground

**Includes**

- Outside jaws
- Inside jaws
- Mounting screws
- Chuck key

ORDER CODE:	C7121
Mounting Type:	Back Plate Mount
Chuck Size (mm):	Ø315
Outside Jaw (mm):	10 - 131
Inside Jaw (mm):	90 - 315
Speed (rpm):	1500
D1 (mm):	260
D2 (mm):	286
D3 (bore) (mm):	103
H (mm):	137
H1 (mm):	94
H2 (mm):	~
h (lowercase) (mm):	5
z-d (mm):	6 x M16
Nett Weight (kg):	50



Product Brochure For C7121

**Recommended Accessories**

L287  
D1-4 Camlock Back Plate



L289  
D1-6 Camlock Back Plate



L286  
D1-8 Camlock Back Plate



L2884  
D1-11 Camlock Back Plate



M055  
Magnetic Base and Dial Indicator



A358  
Sky Hook Lifting Device



A358A  
Chuck Hook



A358C  
Bolt Down Adaptor

