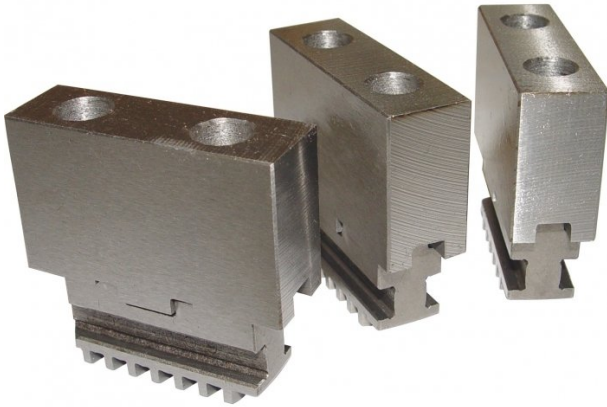


Product Brochure For C2855

Soft Jaw & Base Set

Suit 315mm 3 Jaw Lathe Chuck

| | |
|------------------------|-------|
| ORDER CODE: | C2855 |
| Suits Chuck Size (mm): | Ø315 |



Description

Replaceable master base jaw with soft top jaw for Fuerda K11 chucks.

Soft jaws can be machined and are normally used when high accuracy is required.

They can also be machined to hold odd shapes.

HOW TO! For the best results bore the jaws as close as possible to the size of the material you are holding. This means the jaws must be clamped during the boring as close as possible to the pressure and size they will experience during use.

A lathe boring ring can be used to apply pressure to the jaws during machining.

Features

- Hard base jaw with soft top
- Set of 3

Product Brochure For C2855

Recommended Accessories

L761

Lathe - Boring Ring for Chuck
Soft Jaws

L762

Lathe - Boring Ring for Chuck
Soft Jaws

L764

Lathe - Boring Ring for Chuck
Soft Jaws

L763

Lathe - Boring Ring for Chuck
Soft Jaws

