

Product Brochure For C2833

3 Jaw Self Centring Lathe Chuck - GK11 Forge Steel Body

Ø250mm
Back Plate Mount



Description

250mm GK11 FORGE STEEL BODY BACK PLATE MOUNT

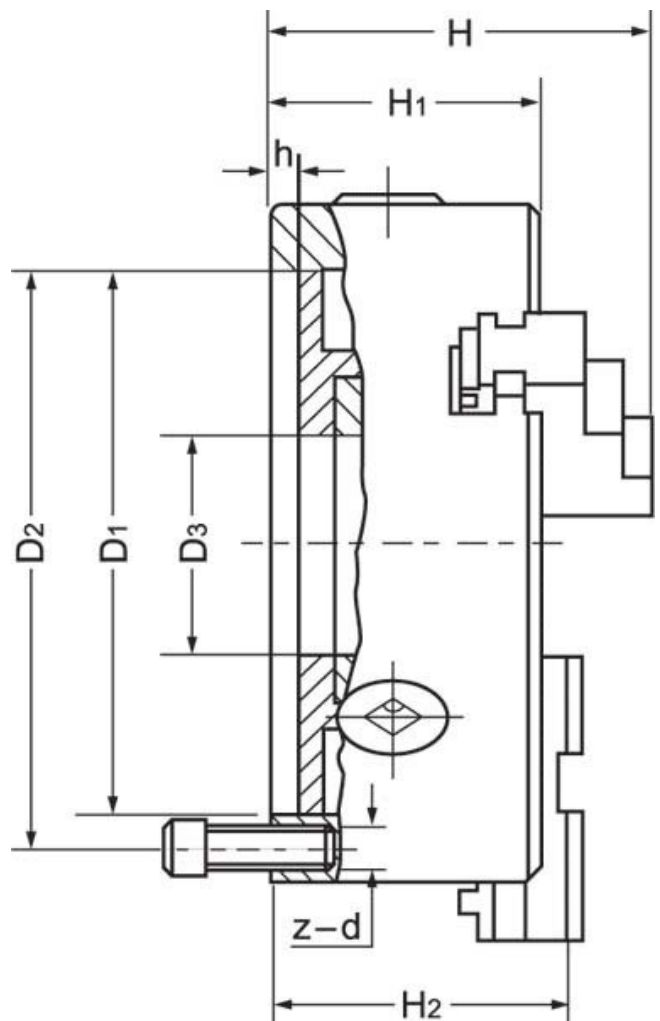
Manufactured to the following standards:

- DIN 6350
- DIN55026
- DIN55027
- DIN55029

Includes

- Outside jaws
- Inside jaws
- Mounting screws
- Chuck key

ORDER CODE:	C2833
Mounting Type:	Back Plate Mount
Chuck Size (mm):	Ø250
Outside Jaw (mm):	6 - 110
Inside Jaw (mm):	90 - 250
Speed (rpm):	3000
D1 (mm):	200
D2 (mm):	224
D3 (bore) (mm):	80
H (mm):	120
H1 (mm):	80
H2 (mm):	84
h (lowercase) (mm):	5
z-d (mm):	6 x M12
Nett Weight (kg):	29



Product Brochure For C2833

Recommended Accessories

L287
D1-4 Camlock Back Plate



L2875
D1-5 Camlock Back Plate



L289
D1-6 Camlock Back Plate



L286
D1-8 Camlock Back Plate



L2884
D1-11 Camlock Back Plate



C2864
Chuck Key



A358
Sky Hook Lifting Device



A358A
Chuck Hook



Product Brochure For C2833

A358C
Bolt Down Adaptor

