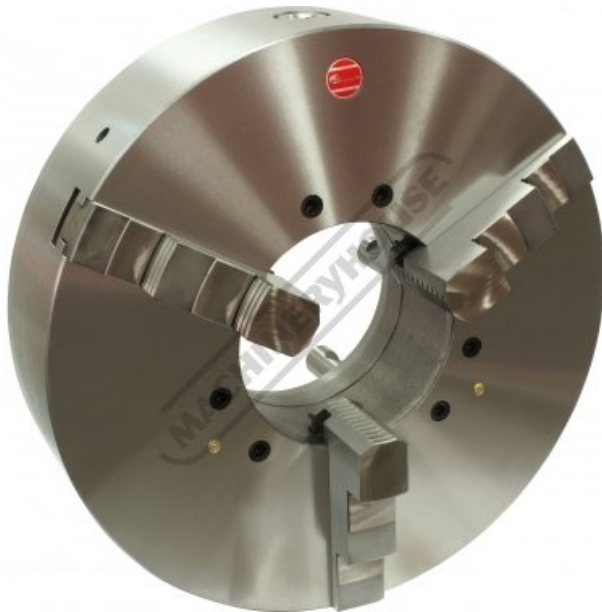


Product Brochure For C2706

## K11-500/D11 - 3 Jaw Self Centring Lathe Chuck

Ø500mm  
D1-11 Camlock Mount

<b>Ex GST</b>	<b>Inc GST</b>
<b>\$2,300.00</b>	<b>\$2,645.00</b>



ORDER CODE:	C2706
Chuck Size (mm):	Ø500
Camlock:	D1-11
Outside Jaw (mm):	11.5 - 210
Inside Jaw (mm):	150 - 500
Speed (rpm):	800
D1 (mm):	196.87
D2 (mm):	235
D3 (mm):	190
H (mm):	222
H1 (mm):	135
h (mm):	20
Nett Weight (kg):	155



### Description

K11 SERIES Cast Iron Body  
Standard GB/T 4346.2-2002

### Features

- World-class and industry leader in the manual lathe chuck field with over 30 years of manufacturing
- ToolMaster quality assurance and accuracy testing ensure standards remain high. ToolMaster is ISO 9001-2000 approved
- Each chuck is supplied with a set of inside and outside jaws and a chuck key

### Includes

- Outside jaws
- Inside jaws
- Chuck key

Product Brochure For C2706

---

**Specific Features**



Front View



Camlock Mount



Included Accessories

**Recommended Accessories**

A358  
Sky Hook Lifting Device

A358A  
Chuck Hook

A358C  
Bolt Down Adaptor

