

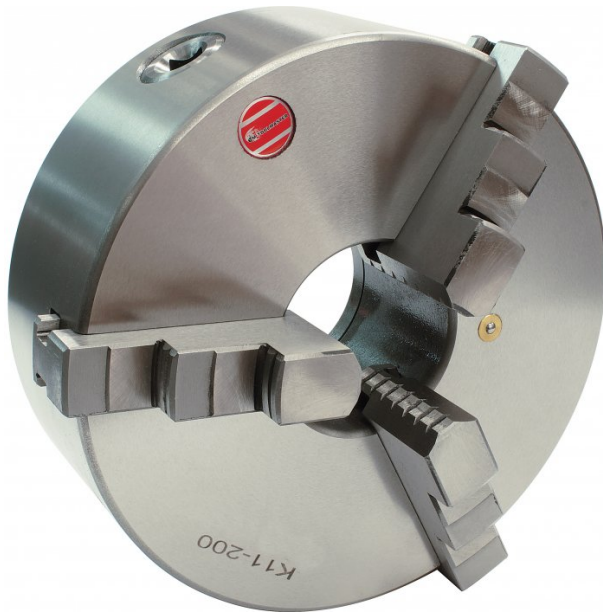
Product Brochure For C205

## 3 Jaw Self Centring Lathe Chuck - K11 SERIES

Ø200mm  
Back Plate Mount

**On Sale**

<b>Ex GST</b>	<b>Inc GST</b>
<b>\$282.00</b>	<b>\$324.30</b>
<b>\$224.35</b>	<b>\$258.00</b>



ORDER CODE:	C205
Mounting Type:	Back Plate Mount
Chuck Size (mm):	Ø200
Outside Jaw (mm):	4 - 85
Inside Jaw (mm):	65 - 200
Speed (rpm):	2000
D1 (mm):	165
D2 (mm):	180
D3 (bore) (mm):	65
H (mm):	109
H1 (mm):	75
H2 (mm):	~
h (lowercase) (mm):	5
z-d (mm):	3 x M10
Nett Weight (kg):	16.5



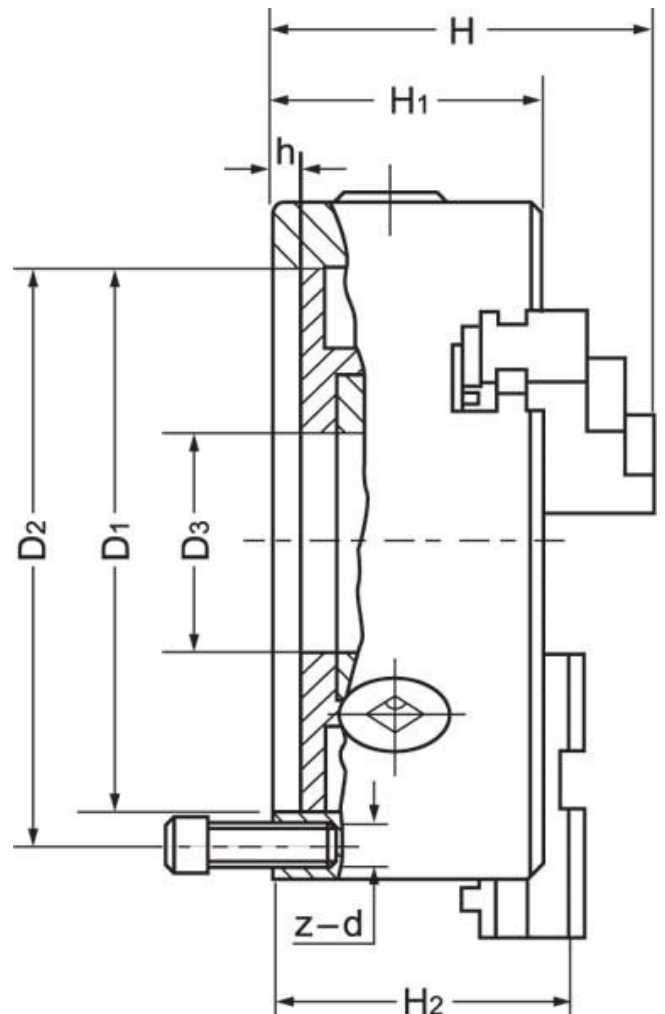
### Description

K11 Series cast iron body lathe chucks are built to GB/T 4346.2-2002 standard, and supplied with one piece standard and reverse jaws.

World-class and industry leader in manufacturing manual lathe chucks for over 30 years. ToolMaster precision tolerance lathe chucks are ISO 9001-2000 approved, and ensure high quality with accuracy testing on every chuck.

### Includes

- Outside jaws
- Inside jaws
- Mounting screws
- Chuck key



Product Brochure For C205

**Specific Features**



Rear View



Parts



Front View

**Recommended Accessories**

C7651  
Soft Jaw & Base Set



L287  
D1-4 Camlock Back Plate



L2875  
D1-5 Camlock Back Plate



A358  
Sky Hook Lifting Device



A358A  
Chuck Hook



A358C  
Bolt Down Adaptor



C2864  
Chuck Key



M055  
Magnetic Base and Dial Indicator

