

Product Brochure For C200

### 3 Jaw Self Centring Lathe Chuck - K11 SERIES

Ø100mm  
Back Plate Mount



**On Sale - Back In Stock Soon**

Ex GST	Inc GST
<b>\$136.00</b>	<b>\$156.40</b>
<b>\$107.83</b>	<b>\$124.00</b>

ORDER CODE:	C200
Mounting Type:	Back Plate Mount
Chuck Size (mm):	Ø100
Outside Jaw (mm):	2 - 30
Inside Jaw (mm):	30 - 80
Speed (rpm):	3500
D1 (mm):	72
D2 (mm):	84
D3 (bore) (mm):	22
H (mm):	74.5
H1 (mm):	55
H2 (mm):	~
h (lowercase) (mm):	3.5
z-d (mm):	3 x M8
Nett Weight (kg):	3.5



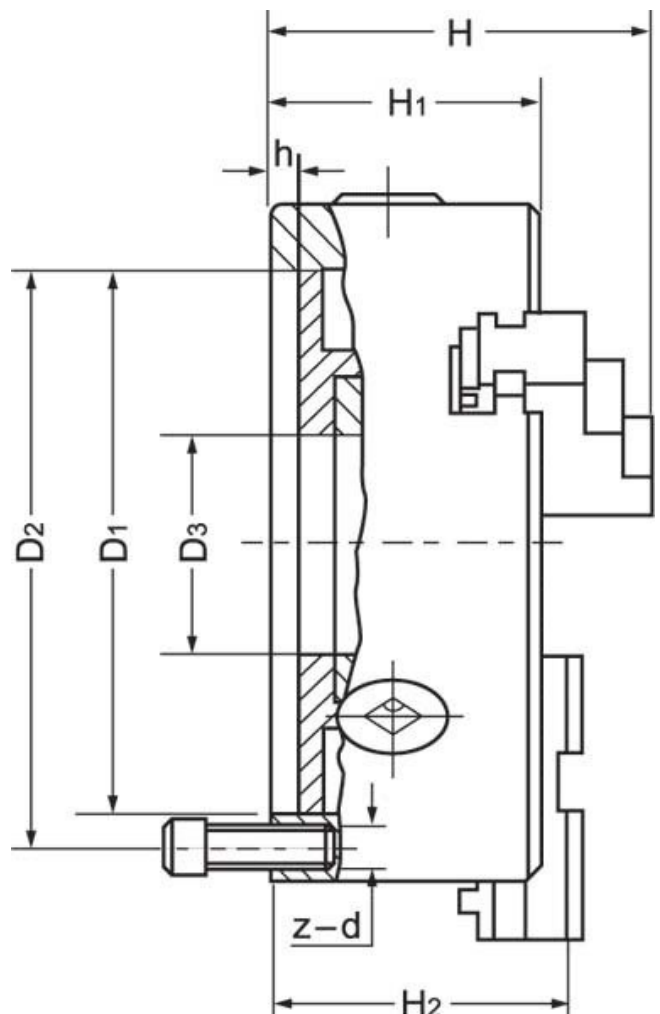
#### Description

K11 Series cast iron body lathe chucks are built to GB/T 4346.2-2002 standard, and supplied with one piece standard and reverse jaws.

World-class and industry leader in manufacturing manual lathe chucks for over 30 years. ToolMaster precision tolerance lathe chucks are ISO 9001-2000 approved, and ensure high quality with accuracy testing on every chuck.

#### Includes

- Outside jaws
- Inside jaws
- Mounting screws
- Chuck key



## Product Brochure For C200

---

### Specific Features



Back Plate Mount



2 Included Accessories

### Recommended Accessories

C2861  
Chuck Key

