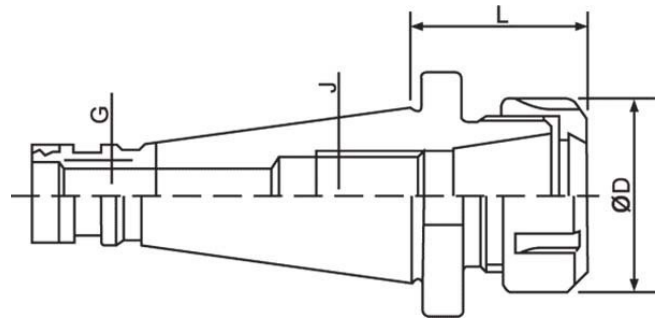


Product Brochure For C104

Collet Chuck - 3MT x ER16 - 3MT x ER16

Ø1-Ø0mm

ORDER CODE:	C104
Collet Type:	ER16
Maximum Capacity (mm):	10
Taper (J):	3MT
Draw Bar (G):	1/2" Whitworth
L (mm):	40
ØD (mm):	28
Nett Weight (kg):	0.3

**Description**

All ER collet chucks meet the specifications of machine tool builders (DIN 2080 taper Shank Grade AT-3 - 85% taper contact)
Maintain a high level of accuracy.

Features

- Precision Ground
- Rated to 10,000rpm

Product Brochure For C104

Recommended Accessories

C840
ER16 Collet Chuck Wrench

C116
Collet Nut ER16

C823
ER16 Collet

