

Product Brochure For B8090

## Motorised Pipe & Tube Rotary Draw Bender - RDB-325

Ø1/2" - Ø2" NB Pipe Capacity, Ø6.35 - Ø76.2mm Round Tube Capacity

**On Sale - Back In Stock Soon**

Ex GST

Inc GST

**\$37,760.00**

**\$43,424.00**

**\$37,000.00**

**\$42,550.00**



ORDER CODE:	B8090
MODEL:	RDB-325
Material (Type):	Pipe & Tube
Material Section (Type):	Round, Square & Rod
Machine (Type):	Electric Hydraulic - Rotary Draw
Hydraulic Jack Size (Tonne):	~
Round Pipe Range (NB) - Mild Steel (inch / mm):	Ø1/2" - Ø2"
Round Tube Range (OD) - Mild Steel (inch / mm):	Ø6.35 - Ø76.2
Square Tube Range (inch / mm):	19.05 - 50.8
Tube Wall Thickness - Mild Steel (inch / mm):	~
Round Pipe (NB) x Wall Capacity - Mild Steel (inch):	Ø2" (Schedule 80)
Round Pipe (NB) x Wall Capacity - Aluminium (inch / mm):	Ø2" (Schedule 80)
Round Pipe (NB) x Wall Capacity - Stainless Steel (inch / mm):	Ø2" (Schedule 40)
Round Tube (OD) x Wall Capacity - Mild Steel (inch / mm):	Ø76.2 x 2.41
Round Tube (OD) x Wall Capacity - Aluminium (inch / mm):	Ø76.2 x 5.15
Round Tube (OD) x Wall Capacity - Copper, Brass (inch / mm):	~
Round Tube (OD) x Wall Capacity - Stainless Steel (inch / mm):	Ø76.2 x 2.41
Round Tube (OD) x Wall Capacity - Chromoly (inch / mm):	Ø76.2 x 2.1
Solid Rod - Mild Steel (inch / mm):	Ø31.75
Square Tube x Wall Capacity - Mild Steel (inch / mm):	50.8 x 3.17
Rectangle Tube x Wall Capacity - Mild Steel (inch / mm):	~
Bend Speed - Maximum (Deg / Sec):	180° / 10
Bend Direction:	~
Centre Line Radius - Maximum (CLR) (inch / mm):	16 1/2" / 419.1mm
Centre Line Radius - Minimum (CLR) (inch / mm):	1/2" / 12.7mm
Tube Formers Included (inch / mm):	~
Pipe Formers Included (inch / mm):	~
Spigot Size on Ram (inch / mm):	~
Angle Capacity (deg):	180°
Hydraulic Pressure - Maximum (psi):	~
Motor Power (kW / hp):	~
Voltage / Amperage (V / amp):	415
Nett Weight (kg):	545

### Description

NOTE: Image shown with Optional Tooling.

Designed to be a workhorse in any shop for decades, this tube and pipe bender can tackle a huge capacity of 2" NB (7/32", schedule 80) pipe (mild steel T.S. 64,000 PSI) and 76.2mm OD round tubing.

### Features

- 16" (406.4mm) maximum centre line radius depending on material OD
- Rotates up to 360° degrees in either direction, ideal for rod applications if you use our optional universal bending plate
- Comes standard with a simple-to-use touchscreen controller

## Product Brochure For B8090

- Internal storage holds up to 170 programs of up to 10 bends per program
- Also accepts micro SD memory card to store programs
- Convenient foot pedal controls let you stop and start the machine while leaving your hands free
- Swing-away counter die system helps you save valuable time on tooling changes and increase your production
- You can add an optional indexing table to bend on varying planes and easily duplicate complex bends

### Includes

- Foot pedal control with forward & reverse

### Specific Features



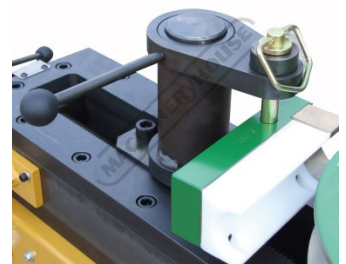
Insert 1



Insert 2



Insert 3



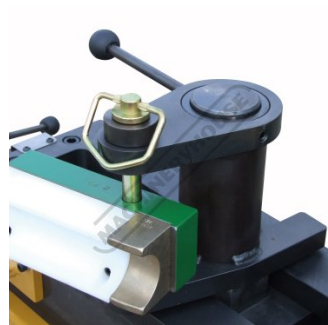
Insert 5



Wheels



Insert 7



Insert 8



Simple to use Touchscreen Controller



Foot Control Emergency Stop

Product Brochure For B8090

**Recommended Accessories**

**B8119**

Pipe/Tube Bending Lube -  
475ml



**B8122**

1/2" NB x 180° Round Pipe Die  
Set



**B8131**

3/4" NB x 180° Round Pipe Die  
Set



**B8141**

1" NB x 180° Round Pipe Die  
Set



**B8152**

1-1/4" NB x 180° Round Pipe  
Die Set



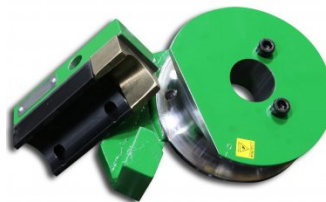
**B8166**

1-1/2" NB x 180° Round Pipe  
Die Set



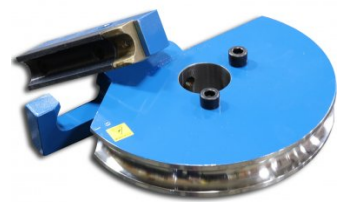
**B8175**

2" NB x 180° Round Pipe Die  
Set



**B8253**

25.4mm OD x 180° Round Tube  
Die Set



Product Brochure For B8090

---

**B8271**

31.75mm OD x 180° Round  
Tube Die Set

**B8287**

38.1mm OD x 180° Round Tube  
Die Set

**B8305**

44.45mm OD x 180° Round  
Tube Die Set

**B8312**

50.8mm OD x 180° Round Tube  
Die Set



**M977**

Digital Bevel Box

