

Product Brochure For B8085

## Motorised Pipe & Tube Rotary Draw Bender - RDB-250

Ø1/2" - Ø2" NB Pipe Capacity, Ø6.35 - Ø63.5mm Round Tube Capacity

**Back In Stock Soon**

Ex GST

Inc GST

**\$28,000.00**

**\$32,200.00**



ORDER CODE:	B8085
MODEL:	RDB-250
Material (Type):	Pipe & Tube
Material Section (Type):	Round, Square & Rod
Machine (Type):	Electric Hydraulic - Rotary Draw
Hydraulic Jack Size (Tonne):	~
Round Pipe Range (NB) - Mild Steel (inch / mm):	Ø1/2" - Ø2"
Round Tube Range (OD) - Mild Steel (inch / mm):	Ø6.35 - Ø63.5
Square Tube Range (inch / mm):	19.05 - 50.8
Tube Wall Thickness - Mild Steel (inch / mm):	~
Round Pipe (NB) x Wall Capacity - Mild Steel (inch):	Ø2" (Schedule 40)
Round Pipe (NB) x Wall Capacity - Aluminium (inch / mm):	Ø2" (Schedule 40)
Round Pipe (NB) x Wall Capacity - Stainless Steel (inch / mm):	Ø1-1/2" (Schedule 40)
Round Tube (OD) x Wall Capacity - Mild Steel (inch / mm):	Ø63.5 x 3.17
Round Tube (OD) x Wall Capacity - Aluminium (inch / mm):	Ø63.5 x 3.96
Round Tube (OD) x Wall Capacity - Copper, Brass (inch / mm):	~
Round Tube (OD) x Wall Capacity - Stainless Steel (inch / mm):	Ø60.32 x 3.17
Round Tube (OD) x Wall Capacity - Chromoly (inch / mm):	Ø50.8 x 3.17
Solid Rod - Mild Steel (inch / mm):	Ø31.75
Square Tube x Wall Capacity - Mild Steel (inch / mm):	50.8 x 3.17
Rectangle Tube x Wall Capacity - Mild Steel (inch / mm):	~
Bend Speed - Maximum (Deg / Sec):	180° / 9
Bend Direction:	~
Centre Line Radius - Maximum (CLR) (inch / mm):	9" / 228.6mm
Centre Line Radius - Minimum (CLR) (inch / mm):	1/2" / 12.7mm
Tube Formers Included (inch / mm):	~
Pipe Formers Included (inch / mm):	~
Spigot Size on Ram (inch / mm):	~
Angle Capacity (deg):	180°
Hydraulic Pressure - Maximum (psi):	~
Motor Power (kW / hp):	~
Voltage / Amperage (V / amp):	240
Nett Weight (kg):	278

### Description

NOTE: Image shown with Optional Tooling.

This compact, programmable tube bender shapes material at blistering speeds with professional accuracy. Made in the USA, the RDB-250 will revolutionise the efficiency of your fabrication shop.

Use this machine for: Creating custom chassis, handrails, boilers, and metal art, among other projects.

Why choose Baileigh's RDB-250 Tube Bender over competing machines?

Cuts down on time and effort for repeat projects by storing complex bend specifications as programs.  
Reduces delays with extremely fast automatic bending.  
Accommodates a wide range of tooling, available from Baileigh, to suit almost any application.

## Product Brochure For B8085

### Features

- Runs on 240-volt single-phase power
- Tackles heavy-duty materials, bending up to Ø63.5mm OD tubing and Ø2" NB (5/32", schedule 40) pipe
- Rotary draw bender smoothly executes 180° bends in just 9 seconds and can complete up to 360° bends
- Internal storage holds up to 170 programs of up to 10 bends per program
- Also accepts micro SD memory card to store programs
- Easy-to-use touchscreen or handy foot pedal can both operate the bender, when not in manual mode
- 2-piece die mount loosens to release bent tubing without a hassle

### Includes

- Foot pedal control with forward & reverse

### Specific Features



Insert 4



Insert 3



Easy to Use Touchscreen



Touchscreen



Foot Control Emergency Stop



Emergency Stop Button



Insert 5



Insert 6



Insert 7



Insert 8



Insert 9

Product Brochure For B8085

**Recommended Accessories**

B8119

Pipe/Tube Bending Lube -  
475ml



B8122

1/2" NB x 180° Round Pipe Die  
Set



B8131

3/4" NB x 180° Round Pipe Die  
Set



B8141

1" NB x 180° Round Pipe Die  
Set



B8152

1-1/4" NB x 180° Round Pipe  
Die Set



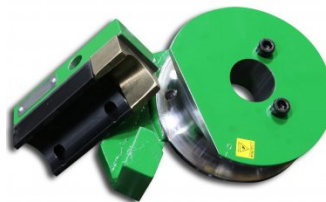
B8166

1-1/2" NB x 180° Round Pipe  
Die Set



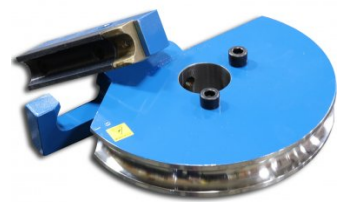
B8175

2" NB x 180° Round Pipe Die  
Set



B8253

25.4mm OD x 180° Round Tube  
Die Set



Product Brochure For B8085

---

**B8271**

31.75mm OD x 180° Round  
Tube Die Set

**B8287**

38.1mm OD x 180° Round Tube  
Die Set

**B8305**

44.45mm OD x 180° Round  
Tube Die Set

**B8312**

50.8mm OD x 180° Round Tube  
Die Set



**M977**

Digital Bevel Box

