

Product Brochure For C1001

KL-102B - Vertical Toggle Clamp

100kg Capacity



Features

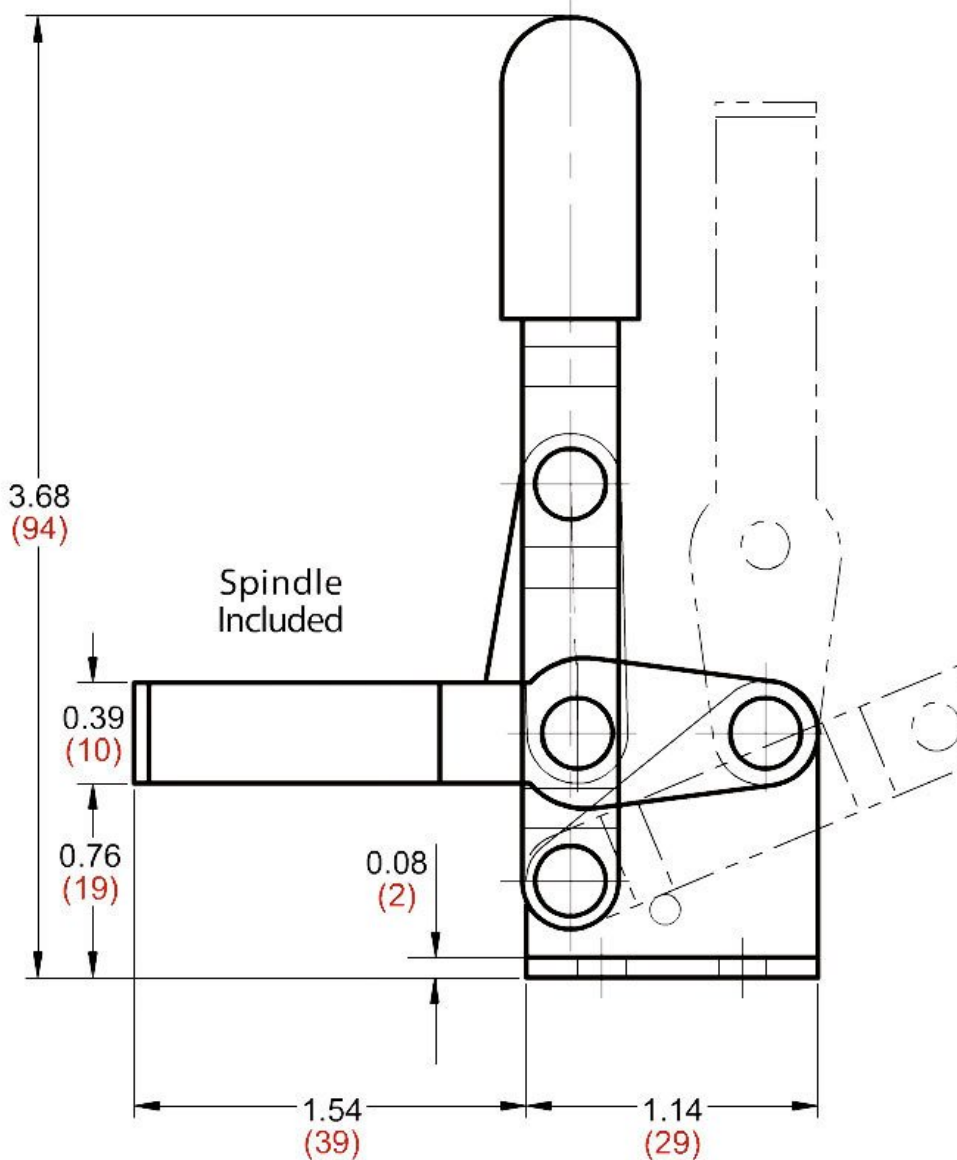
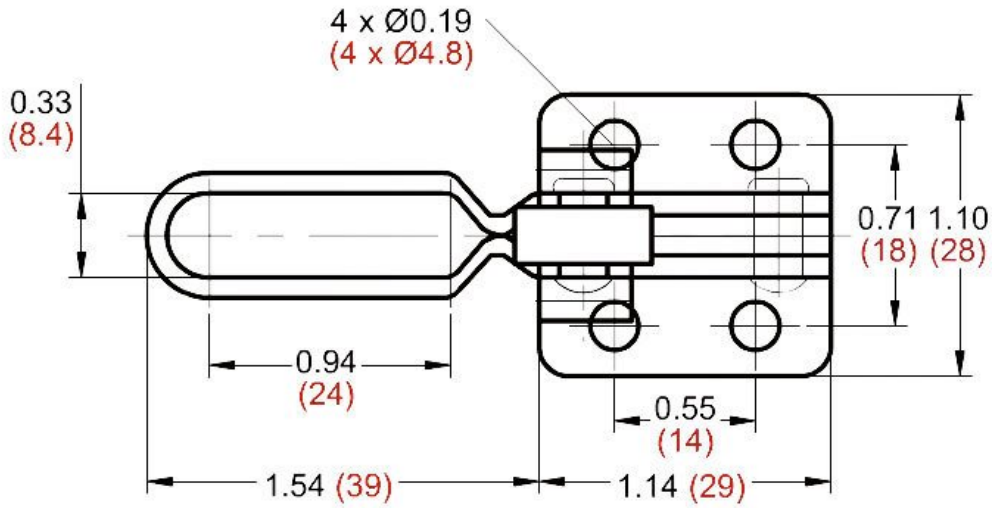
- KL-102B - Vertical Toggle Clamp
- Holding capacity: 100kg
- Handle moves: 65°
- Bar moves: 90°
- Weight: 360g

Ex GST
\$16.00

Inc GST
\$18.40

ORDER CODE:	C1001
MODEL:	KL-102B
Type:	Vertical & Toggle Clamp
Table Height with Stand (mm):	~
Suits Table Size:	~
Material Finish:	~
Clamping Capacity:	100kg
Locking Handle - Pivot Movement:	65°
Clamp Bar - Pivot Movement:	90°
Plunger Travel (mm):	~
Throat Depth (mm):	~
Opening (mm):	~
Size:	~
Size:	~
Quantity Per Pack (No.):	1
Thread:	~
Number of Holes (No.):	~
Slot Length (mm):	~
Magnet Clamp Angle (deg):	~
Pull Force (kg):	~
Clamping Force (kg):	~
Suits:	~
Over all Length:	~
Nett Weight (kg):	0.36

Product Brochure For C1001



UNIT: inch (metric mm)

Product Brochure For C1001

Specific Features



Open Position

Recommended Accessories

C100
Vertical Toggle Clamp

C0999
Vertical Toggle Clamp

C0998
Vertical Toggle Clamp

C1003
Horizontal Toggle Clamp

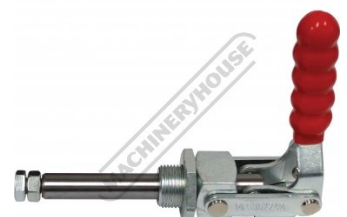


C1005
Horizontal Toggle Clamp

C1006
Horizontal Toggle Clamp

C1008
Straight Line Toggle Clamp

C1011
Straight Line with Threaded Collar Toggle Clamp



Product Brochure For C1001

C1009
Straight Line Toggle Clamp

C1010
Straight Line Toggle Clamp

